

Welcome to the Octopus UTME practice test software

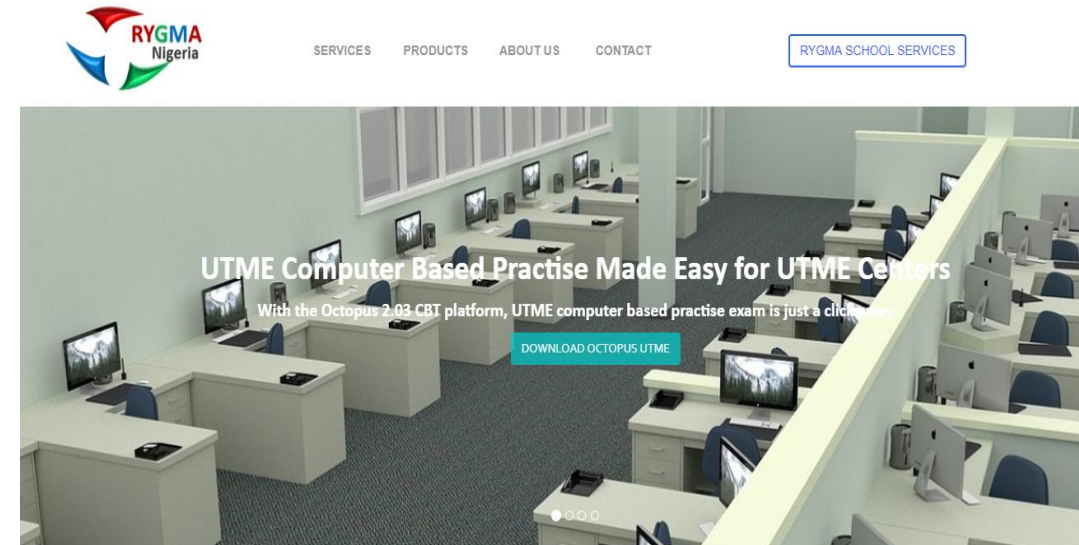
In this document we will show you how to setup
your Octopus UTME practice test software

STEP 1

Register and download the Octopus UTME Practice test software from the rygma website:

- i. Visit www.rygma.com
- ii. Click “Download Octopus UTME”
- iii. Input your registration detail and click register
- iv. Download the Octopus UTME Server Setup

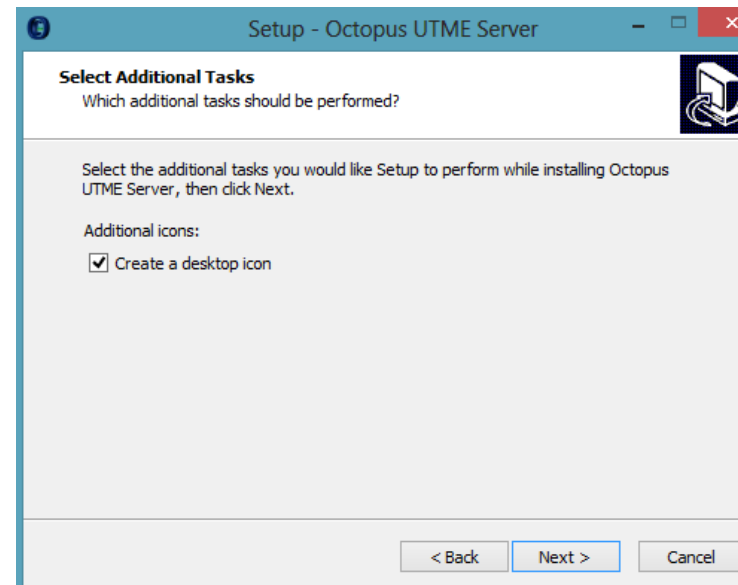
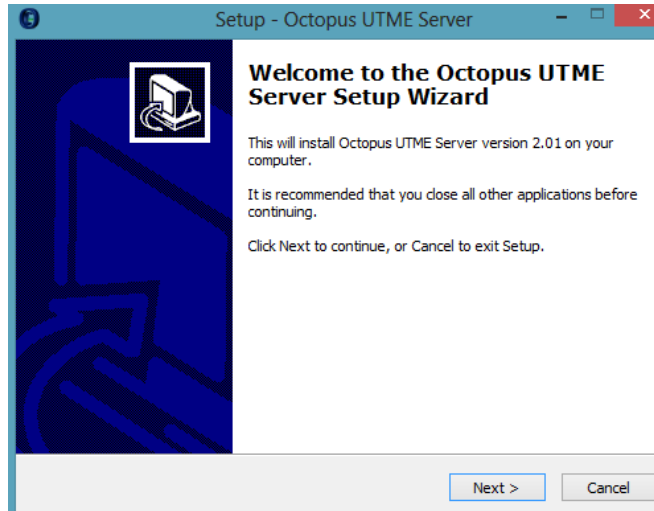
N.B: Your username and password will be your octopus utme practice test software username and password



STEP 2

After download completes, un-zip the contents of the download folder and install the Octopus UTME Server setup.

N.B: Remember to check the 'Create desktop icon' box when prompted during installation



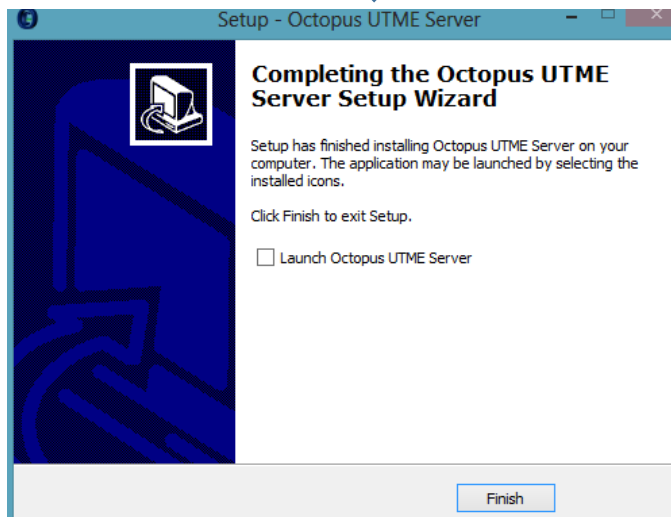
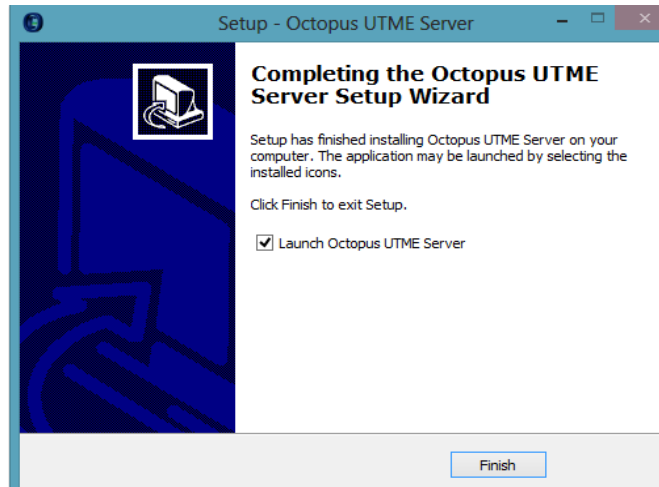
STEP 3

After Installation;

← The “Launch Octopus UTME Server” box will appear checked.

Uncheck the “Launch Octopus UTME Server” box then click finish.

Failure to uncheck the box before clicking finish will prompt an error

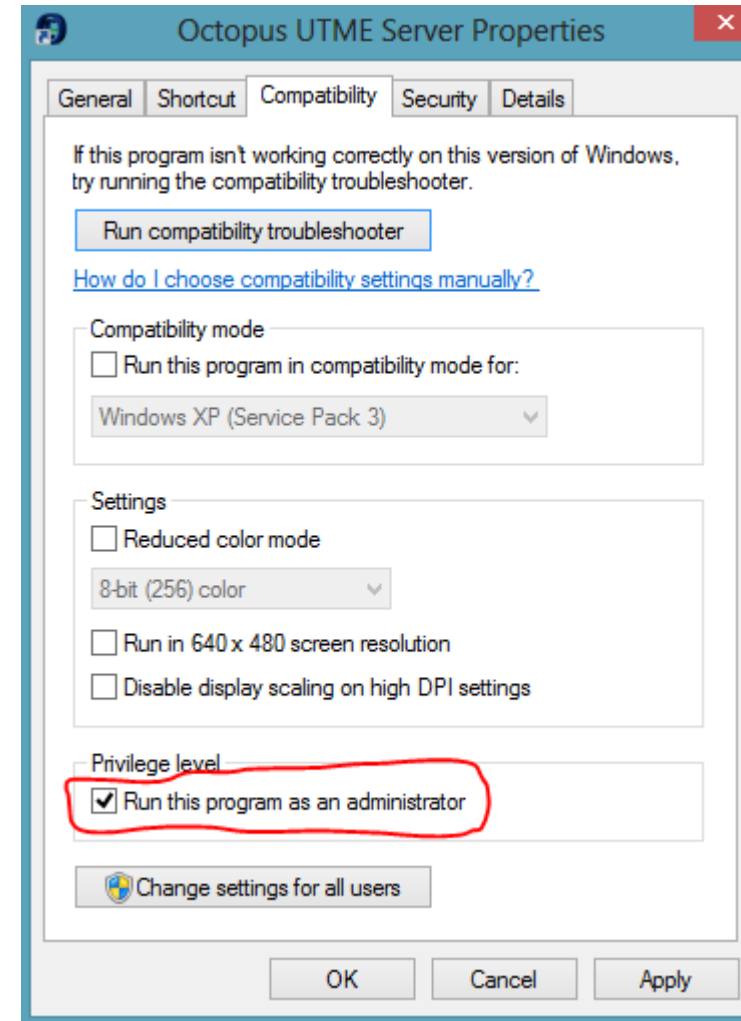


STEP 4

After Installation Cont.;

Right click the **Octopus UTME Server** Icon created on your desktop and select the 'Properties option' – Click the 'Compatibility tab' – Check the 'Run this program as administrator' box and click OK

This enables your practice test software to always run as administrator



STEP 5

Good!

Now, to start your **Octopus UTME Server**;

- i. Connect your system to the internet and double click the **Octopus UTME Server** icon – A splash screen will display to validate your software's health & configuration

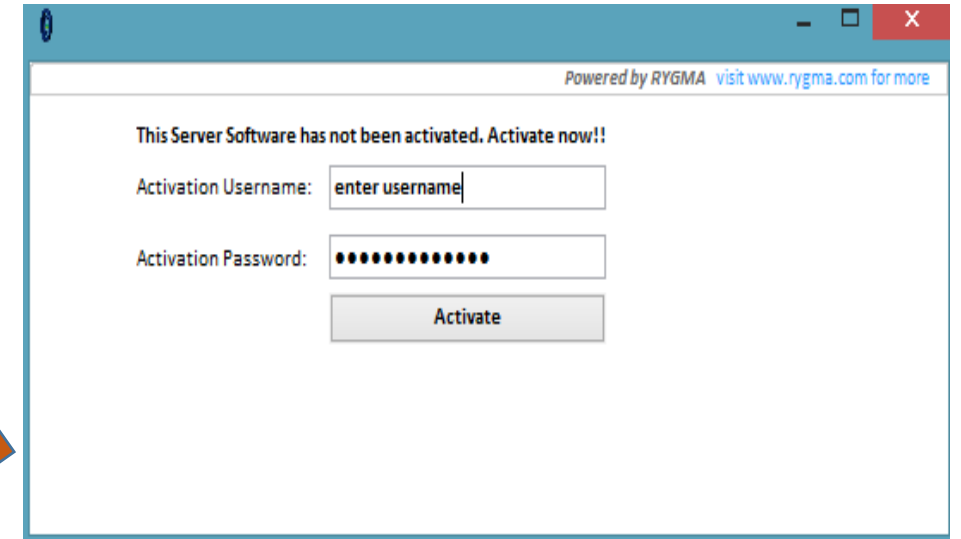
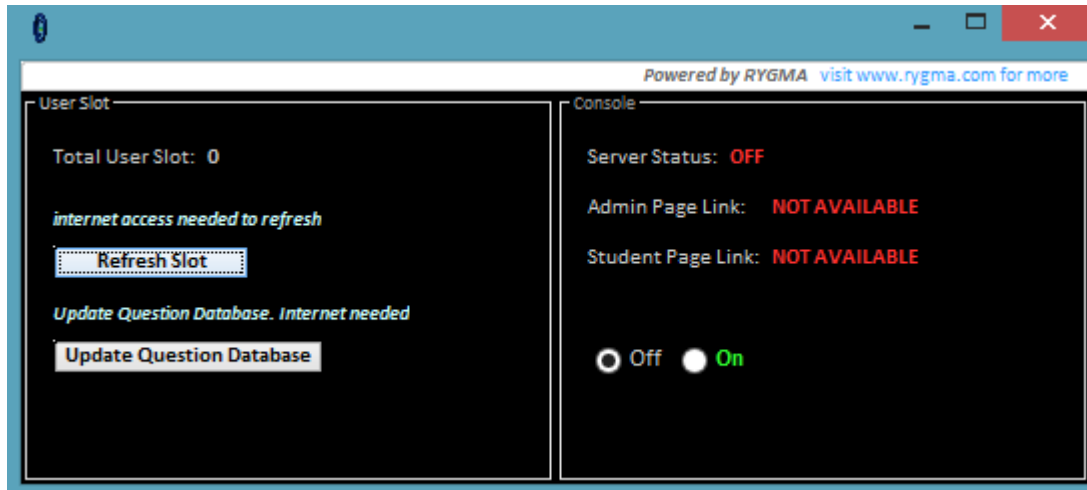
N.B:

- If your computer date and time is incorrect or your computer isn't connected to the internet, you will get notices requesting you adjust respective error.
- If no error shows up your **Octopus UTME Server** will start up

STEP 6

If you're starting the **Octopus UTME Server** for the first time, you'll be requested to activate your software:

Input your registration 'Username' and 'Password' and hit Activate

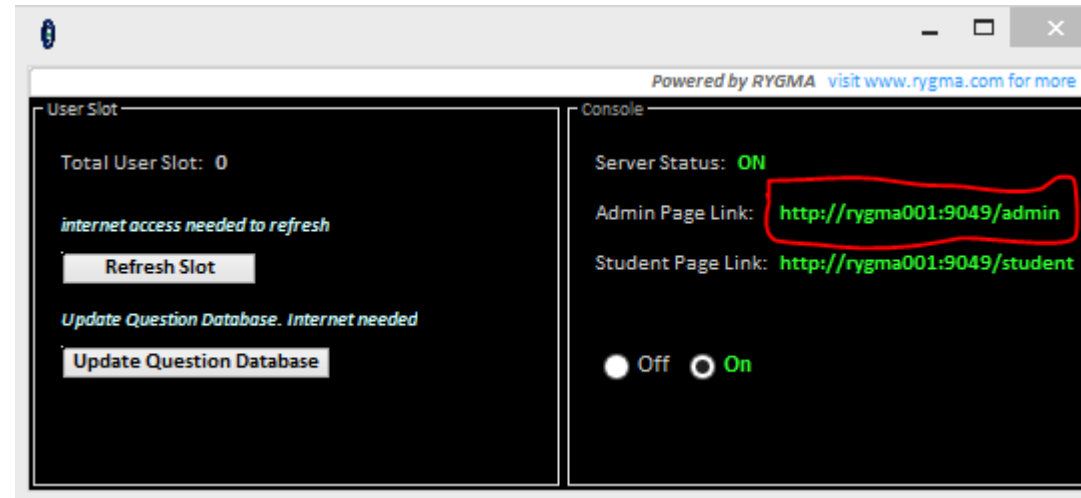


...Your Software will activate and your practice test server will start.

...Now disconnect your internet connection and proceed to the next step!

STEP 7

The Octopus UTME Server Interface

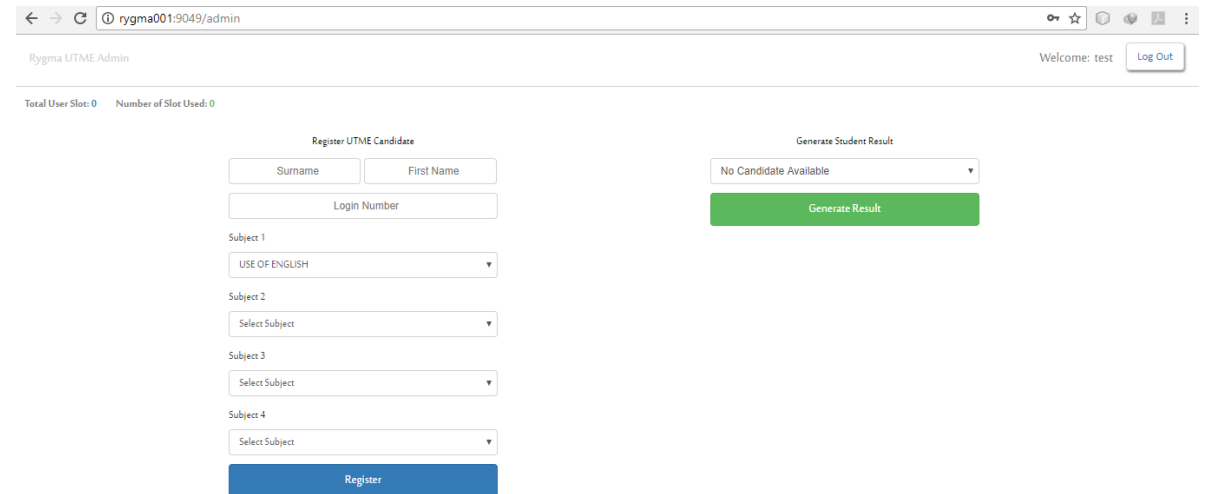
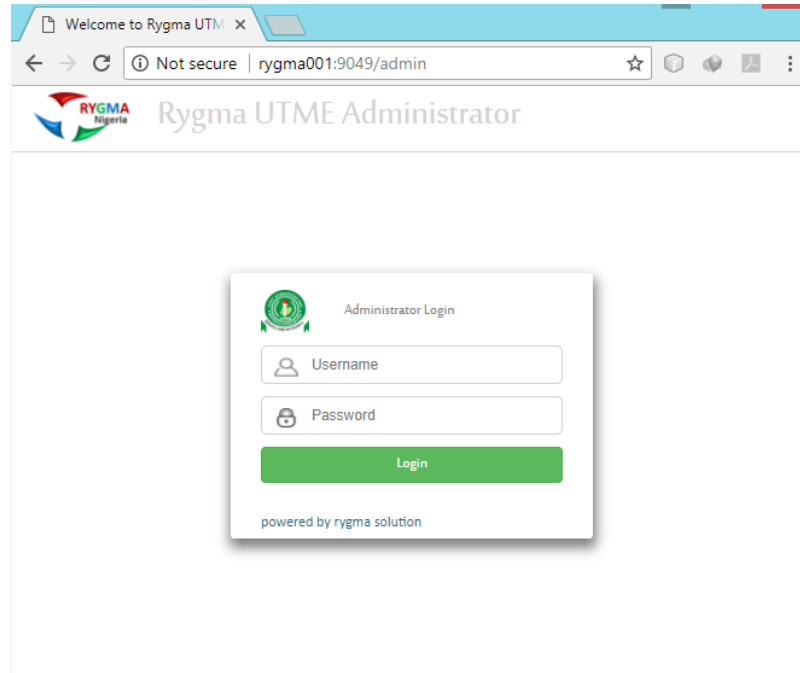


- Click the 'on' button
- And copy your unique Admin link into any internet browser (Chrome, Firefox, Internet Explorer) on any computer connected to your server network, to assess your admin portal.

STEP 8

Your admin portal should be displayed now...

Enter your login details and hit the Enter key



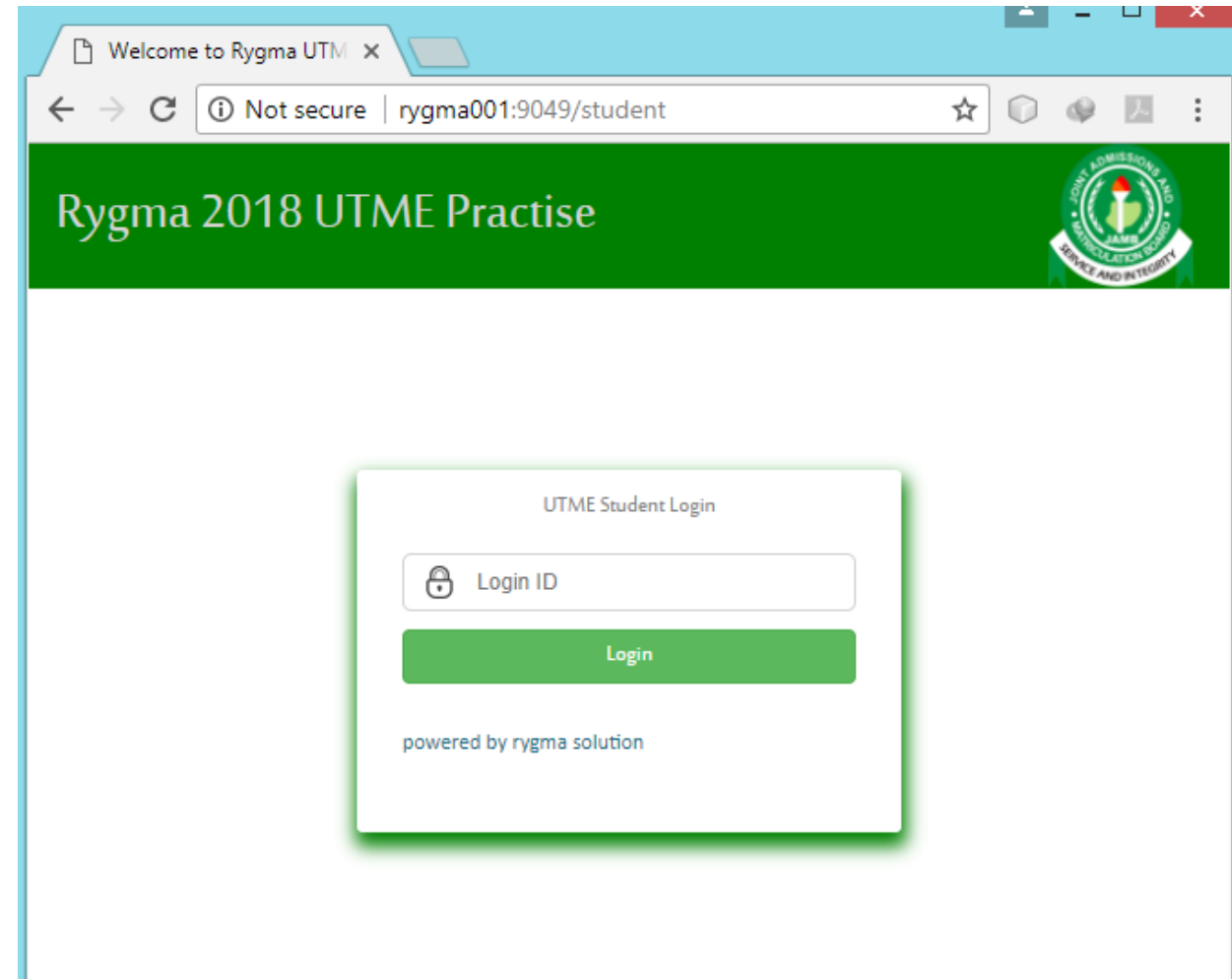
Admin Portal Interface:

- Top left corner – **User Slot details**
- Center Area – **Candidate registration section**
- Top right corner - **Result retrieval section**

STEP 9

A registered student can take the test by;

Entering your 'Student portal link' into an internet browser, on any systems connected to the server network.



Features of the Octopus UTME practice test software

- Auto-Test-Resume – Resumes test from last session
- Keyboard option selection – Key 'A' for option (a), Key 'B' for option (b), Key 'C' for option (c), Key 'D' for option (d), Key 'N' for Next, Key 'P' for Previous.
- Easy update of questions Database – Question Database is updated with a single click of a button
- Questions based on current UTME syllabus (e.g English questions on Independence day)